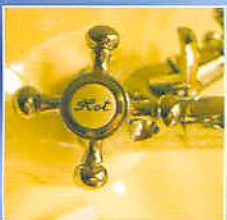


*nuwave*TM

Experience the benefits of softened water...



MD260 & MD160

What is 'Hard' water?

Rain water is naturally "soft" but when rain water falls on calcium, chalk, limestone or any other soft rock formation, it is the minerals within these rocks that dissolve into the water, giving you hard water around your home. Over 60% of households in the UK suffer from the effects of hard water.



Cross section of a scaled hot water pipe.

HARD WATER AREAS

KEY:

Soft water

Hard water

Very Hard water



The Cost...

Hard water scales up your hot water tanks, pipes, washing machines and heating systems. Government figures show that an amazing 38% loss in heating efficiency will occur with just 6mm of scale build up within an average family home heating system.

It is not too late to install a Nuwave water softener. Once you have, it will start to dissolve any existing scale and more importantly it will prevent any future scale build up!

% OF FUEL WASTED



How a *nuwave*™ water softener works...

A water softener works by forcing hard water into a tank of millions of tiny beads of special resin. As the hard water passes over the beads a process known as ion exchange occurs and this causes the water to become soft. After a while (how long depends on the hardness of your water and the number of people in the house) the resin becomes exhausted and has to be regenerated. This is achieved by flushing the resin with salt water, a process known as regeneration. The salt water solution is washed away to drain and does not enter the household water supply. This approach is common to all water softeners but it's how each manufacturer goes about it that separates the best from merely average.



The Benefits of softened water

- Over 50% reduction in the use of shampoos, soaps, conditioners & cleaning products.
- Lower heating bills.
- Your glassware will sparkle & plates will shine.
- Experience the softer feeling of your clothes & towels.
- Your heating systems around your home will become more efficient.
- Luxurious soap lather and double the amount of bubble bath suds.
- Cleaning time around the home will be dramatically reduced.



The *nuwave*™ range

The MD260 & MD160 have been designed to be the most compact water softeners on the market today. The MD260 will produce *650 gallons of softened water between each regeneration cycle and will easily accommodate a family of up to 8 people.

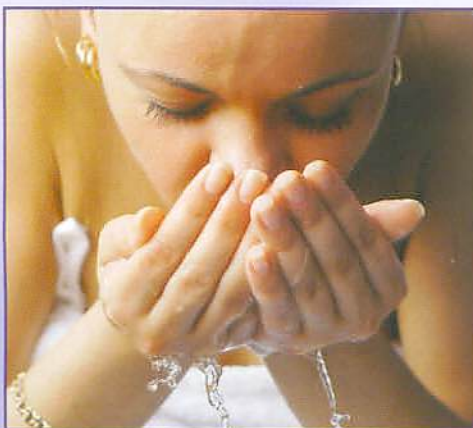
However if your family is slightly smaller, our MD160 model may be the option, its capacity (*300 gallons) is perfectly suited for families of 1-3 people.

For both models, the superior performance is achieved by the careful design of its high capacity resin vessel and by the use of finer, more efficient resin. You see, we spend more money buying the best resin so that you save money by using less salt! The result is more softened water for every kilogram of salt used.

*@21° Clark hardness

The Valve...

All of our Nuwave models have sophisticated metered control valves that take care of all of the machines functions completely automatically. The Fleck range of valves that we use on our water softeners are trusted and are well proven within the industry and are also universally acknowledged as the most reliable in the world. Fleck valves have continued to lead the industry successfully within the UK for over 30 years.





MD260

Specification

Height	632mm	(24 7/8")
Depth (inc. hoses)	502mm	(19 3/4")
Width	277mm	(10 7/8")
Capacity @ 21° Clark	2,950 ltrs	(650 gallons)
Salt used per regeneration	2.4kg	(5.3 lbs)
Power	240 volts	
Valve type	Fleck 5600	
Water pressure	Min 1.7 bar - Max 5 bar	
Family size	1-8 people	

Flow rates

Standard Fitting Kit	12 ltrs	(2.7 gallons) per min
15mm Rigid plumbed	27 ltrs	(6 gallons) per min
22mm Hi-Flow Kit	50 ltrs	(11 gallons) per min



MD160

Specification

Height	543mm	(21 3/8")
Depth (inc. hoses)	502mm	(19 3/4")
Width	277mm	(10 7/8")
Capacity @ 21° Clark	1,341 ltrs	(300 gallons)
Salt used per regeneration	1kg	(2.2 lbs)
Power	240 volts	
Valve type	Fleck 5600	
Water pressure	Min 1.7 bar - Max 5 bar	
Family size	1-3 people	

Flow rates

Standard Fitting Kit	12 ltrs	(2.7 gallons) per min
15mm Rigid plumbed	23 ltrs	(5 gallons) per min
22mm Hi-Flow Kit	45 ltrs	(10 gallons) per min

All **nuwave** models require an electrical point, overflow and drain accessible to the point of installation. Timer model's available on request.

Manufactured in Britain



YOUR LOCAL SPECIALIST:

 **Pentair Water**